



## Loughborough Park, Brixton, SW9

2 bedroom flat - purpose built for sale

£585,000

Leasehold

### Property Details

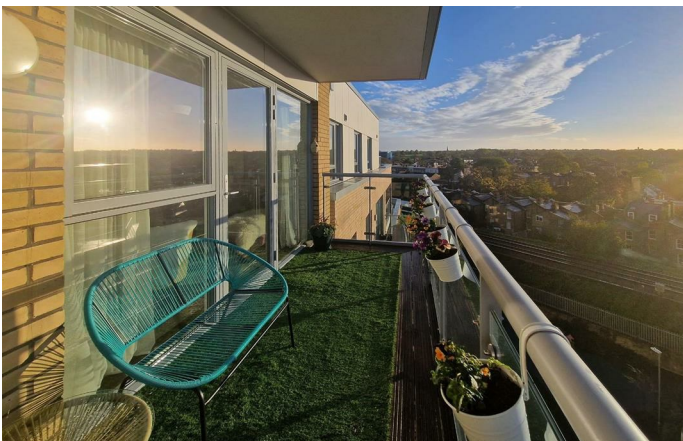
Natural light is a running theme throughout this sixth-floor apartment with stunning floor-to-ceiling, large paned double-glazed windows in every room. Each of the windows has stunning panoramic views over the London Skyline and the living space flows seamlessly into an incredible private terrace, the perfect spot to watch the world go by and savour the views in the warmer months of the year within the privacy of your own home. The open-plan reception is the heart of the home, beautifully bright and spacious with a contemporary integrated kitchen complete with plenty of storage options and surface space. The room is ideal for entertaining or relaxing in peace, tucked away securely with space for a large dining table. The two bedrooms are well-proportioned doubles with the principle bedroom benefitting from a modern en-suite bathroom and built-in storage. There is a further family-sized bathroom accessible from the central hallway, which provides access to all rooms as well as significant storage throughout, perfect for hiding away all those items unused on a regular basis.

Council tax band D    EPC rating B (85)

### Features

- Two double bedrooms
- Two bathrooms
- Private terrace
- Sixth floor with stunning panoramic views
- Secure and well maintained modern build
- Private parking
- Ideally located between Brixton and Herne Hill
- Within easy reach of Brockwell Park
- Extremely energy efficient - EPC B rating
- Manicured communal grounds

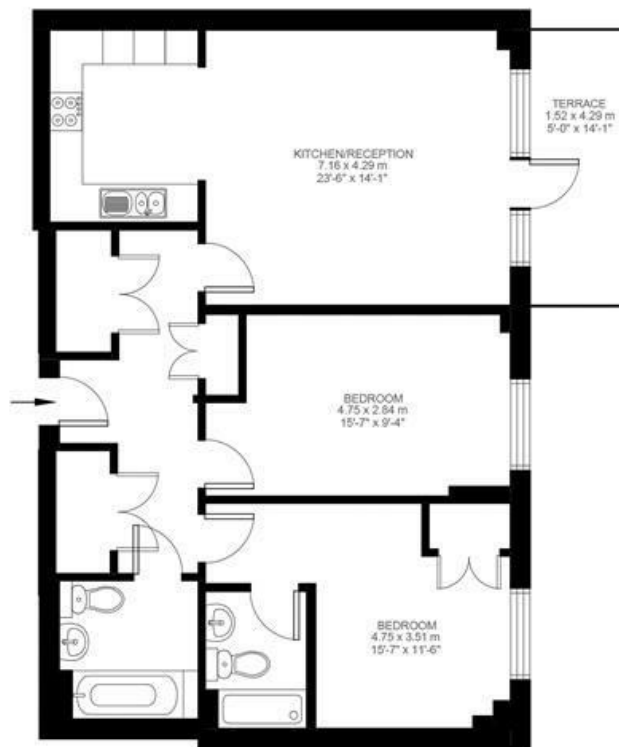




Loughborough Park, Stockwell, SW9

2 Bedroom Flat

Approximate internal area: 807 sqft 75 sqm



Sixth Floor



While we do try our very best, floor plans are produced as a guide only and we take no responsibility for the precise accuracy with which any property is represented.

Loughborough Park, Brixton, SW9

